

# CELL ISOLATION AND ORGAN FUNCTION CORE VOUCHER ANNOUNCEMENT

EXPLORE SPECIALIZED SERVICES WITH OUR CORE

## SERVICES (CHOOSE ONE FOR VOUCHER APPLICATION)

RNAscope immunofluorescence - voucher covers full cost

- A combined technique that uses RNAscope's fluorescent in situ hybridization (FISH) to detect RNA molecules within a specific cell or tissue

Electric Cell-substrate Impedance Sensing (ECIS) - voucher covers full cost

- A real-time, label-free, impedance-based method to study cell behaviors, such as permeability, in monolayer cell culture

Histology - voucher covers 70% of requested amount

- Includes tissue embedding, sectioning, H&E, trichrome, Sirius red, Oil Red O (ORO) staining and immunofluorescence

Full slide scanning - voucher covers 70% of requested amount

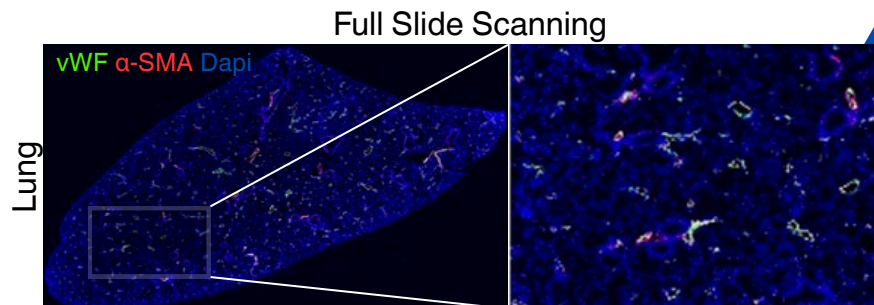
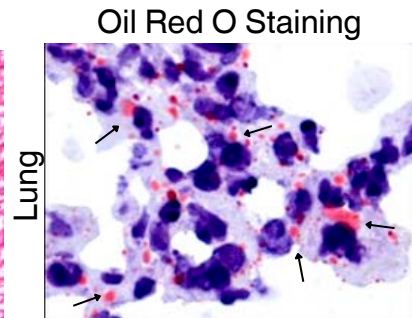
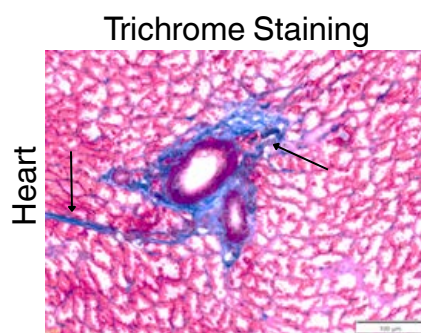
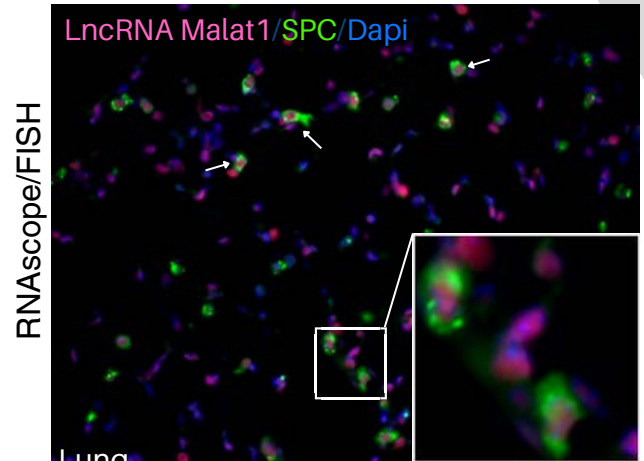
- Full slide scanning using an Olympus APX100 microscope with 4x-40x magnification

ELISA - voucher covers 70% of requested amount

- An enzyme immunoassay to detect specific proteins, such as cytokine and chemokine

## FOCUS

- Lung
- Heart
- Smooth Muscle Aorta
- Others - Please consult



APPLICATION DEADLINES:  
NOVEMBER 28, 2025  
FEBRUARY 6, 2026

REACH OUT TO VALERIA\_ZARATE@BROWN.EDU FOR CONSULT BEFORE APPLYING\*

[HTTPS://CPVB.ORG/SERVICE-CORES/VOUCHER-APPLICATION/](https://cpvb.org/service-cores/voucher-application/)

FEATURED SERVICES ARE ELLIGIBLE FOR THIS VOUCHER. VISIT OUR WEBSITE FOR A FULL LIST OF AVAILABLE SERVICES